



Quilt is 70" x 70".

LATITUDE

enjoy the journey

moda

© *by* Kate Spain

LATITUDE

enjoy the journey

© *by* Kate Spain

Quilt is 70" x 70".

Fabric Requirements

Heart

1 Latitude Layer Cake
27250LC (42-10" squares)

Background (directional): 3¾ yards
Whispers Muslin Mates (33136 16)

Heart & Binding One: ⅝ yard (27250 281 red)

Heart & Binding Two: ⅝ yard (27250 259 red)

Backing: 4⅛ yards

Featured fabric

LATITUDE

enjoy the journey

© *by* Kate Spain



moda

MODAFABRICS.COM

WEB27250



LATITUDE

enjoy the journey

© *by* Kate Spain

Quilt is 70" x 70".

Cutting

Heart

From EACH of the Layer Cakes squares cut

1-6¼" square, cut in half twice on the diagonal to make 4 quarter-square triangles (QST)

Heart, Binding One & Two

For EACH of the 2 bindings cut

4-2½" x width of fabric strips (8 total)

1-6¼" x width of fabric; cut into 3-6¼" squares; cut in half twice on the diagonal to make 12 quarter-square triangles

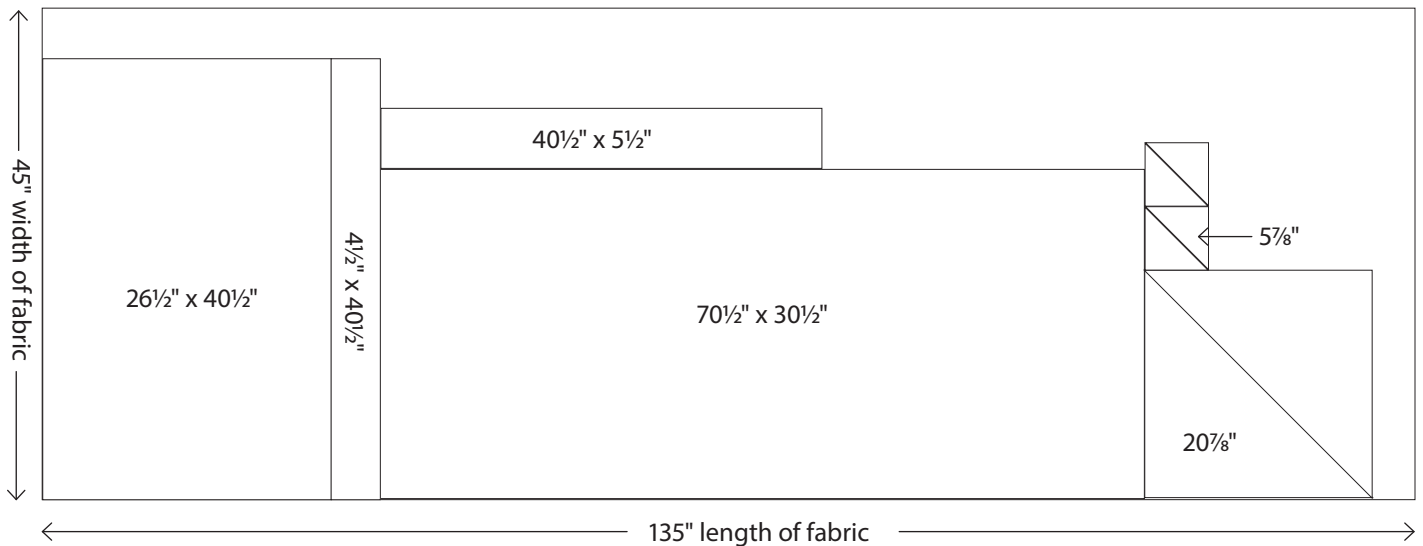
(These are additional red quarter-square triangles you can use when assembling the heart. You will have extras.)

Background

1-40½" x length of fabric strip

From the strip, cut 1-26½" x 40½", 1-4½" x 40½", 1-70½" x 30½", 1-40½" x 5½",

1-20⅞" square; cut on the diagonal to make 2 half-square triangles and 2-5⅞" squares; cut in half on the diagonal to make 4 half-square triangles



moda

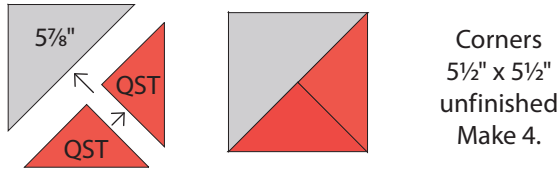
Use 1/4" seams. Press in the direction of the arrows in the diagrams.

Construction

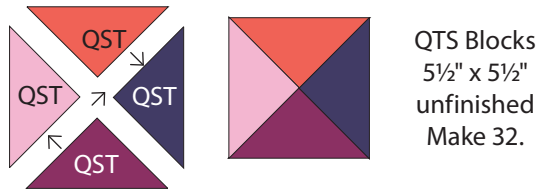
1 Heart

(A) Use a design board or the coloring sheet, on page 3, to arrange the placement of the quarter-square triangles.

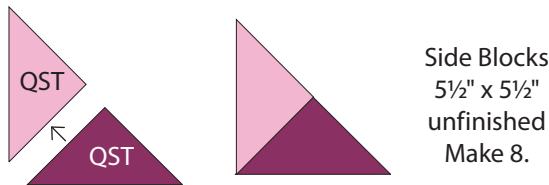
(B) Sew 1-5 7/8" background triangle and 2-6 1/4" heart quarter-square triangles to make 1 corner square. Make 4.



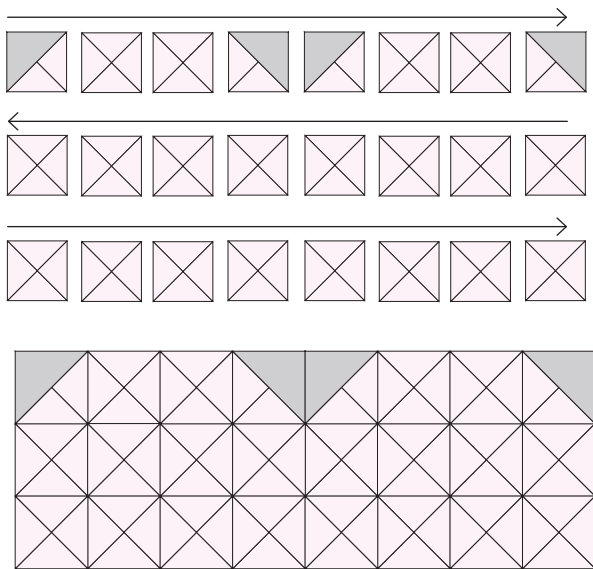
(C) Sew 4 heart quarter-square triangles into 32 quarter-triangle squares blocks (QTS blocks):



(D) Sew 2 heart quarter-square triangles into 8 side blocks.

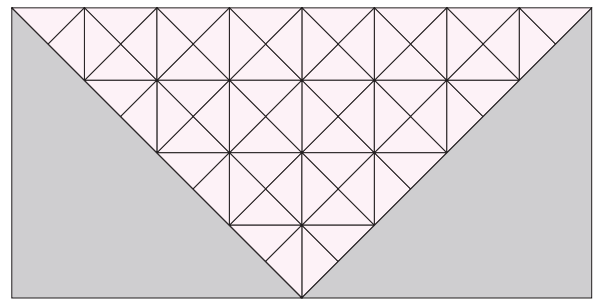
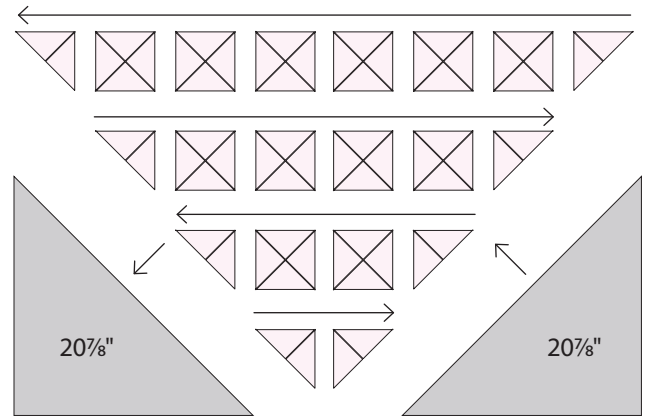


(E) Join 4 corners and 20 QTS blocks to make the heart top in rows as shown. Join the rows.



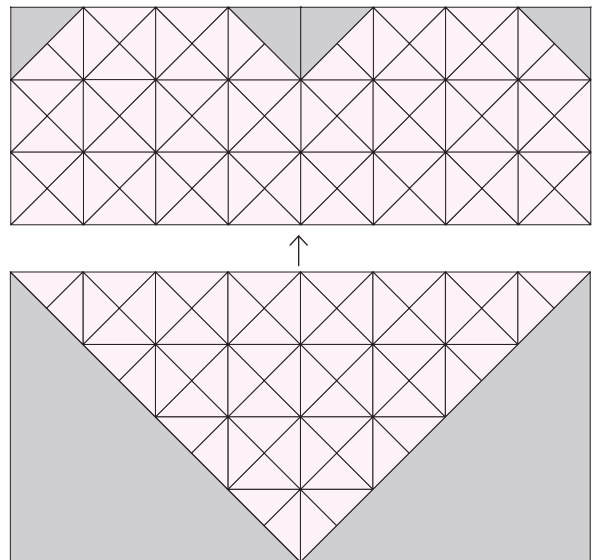
Heart Top
40 1/2" x 15 1/2" unfinished
Make 1.

(F) Join 8 sides, 12 QTS blocks, and 2-20 7/8" background triangles to make the heart bottom in rows as shown. Join the rows.



Heart Bottom
40 1/2" x 20 1/2" unfinished
Make 1.

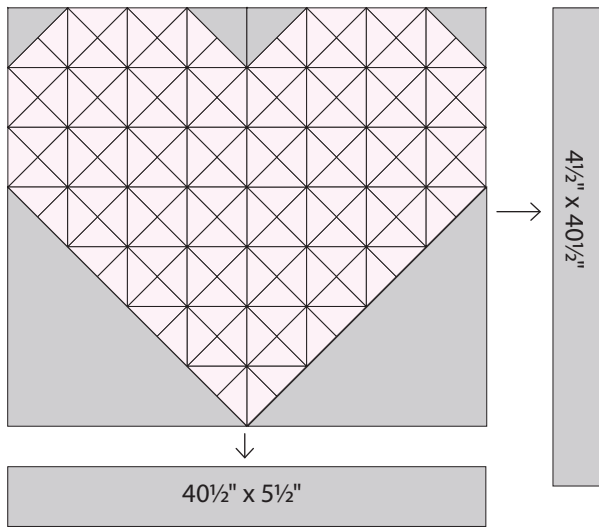
(G) Join the top and bottom of the heart.



Heart
40 1/2" x 35 1/2" unfinished

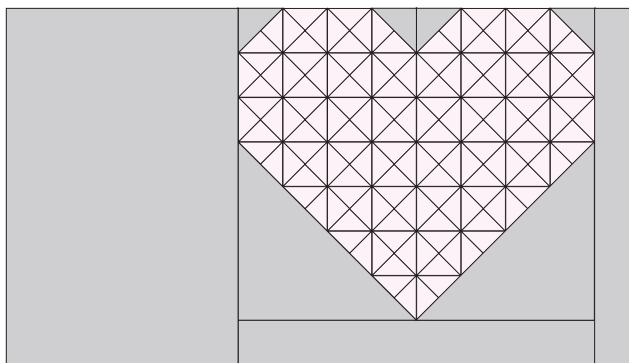
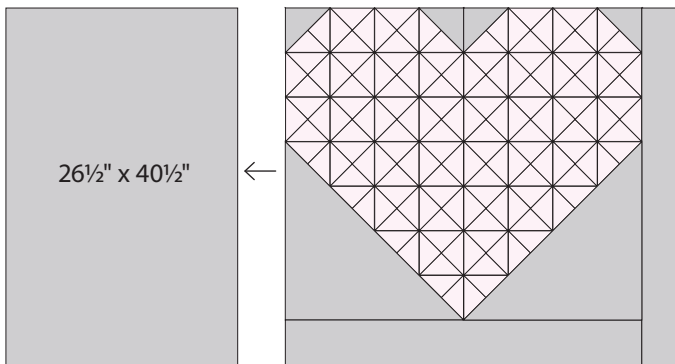
2 Assemble the quilt.

- (A) Add a $40\frac{1}{2}$ " x $5\frac{1}{2}$ " background strip to the heart bottom. Add a $4\frac{1}{2}$ " x $40\frac{1}{2}$ " background strip to the heart side as shown.



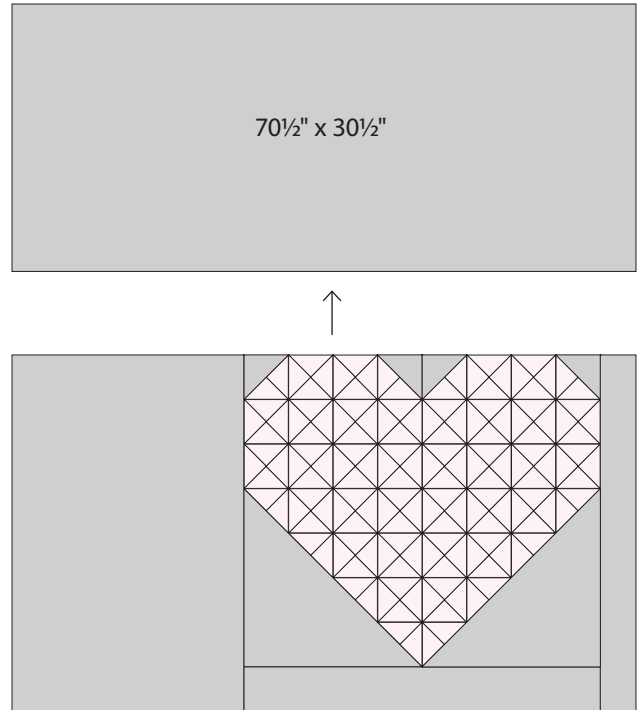
Quilt is now $44\frac{1}{2}$ " x $40\frac{1}{2}$ " unfinished.

- (B) Add the $26\frac{1}{2}$ " x $40\frac{1}{2}$ " background strip to the quilt top as shown.

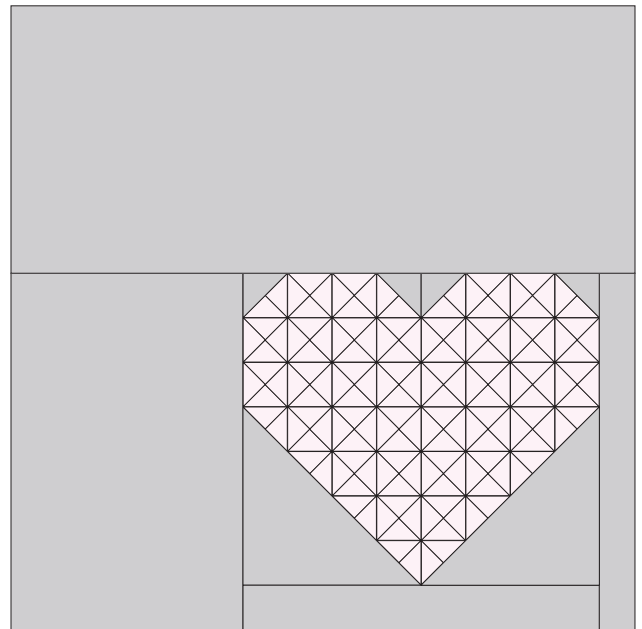


Quilt is now $70\frac{1}{2}$ " x $40\frac{1}{2}$ " unfinished.

- (C) Add the $70\frac{1}{2}$ " x $30\frac{1}{2}$ " background strip to the quilt top as shown.

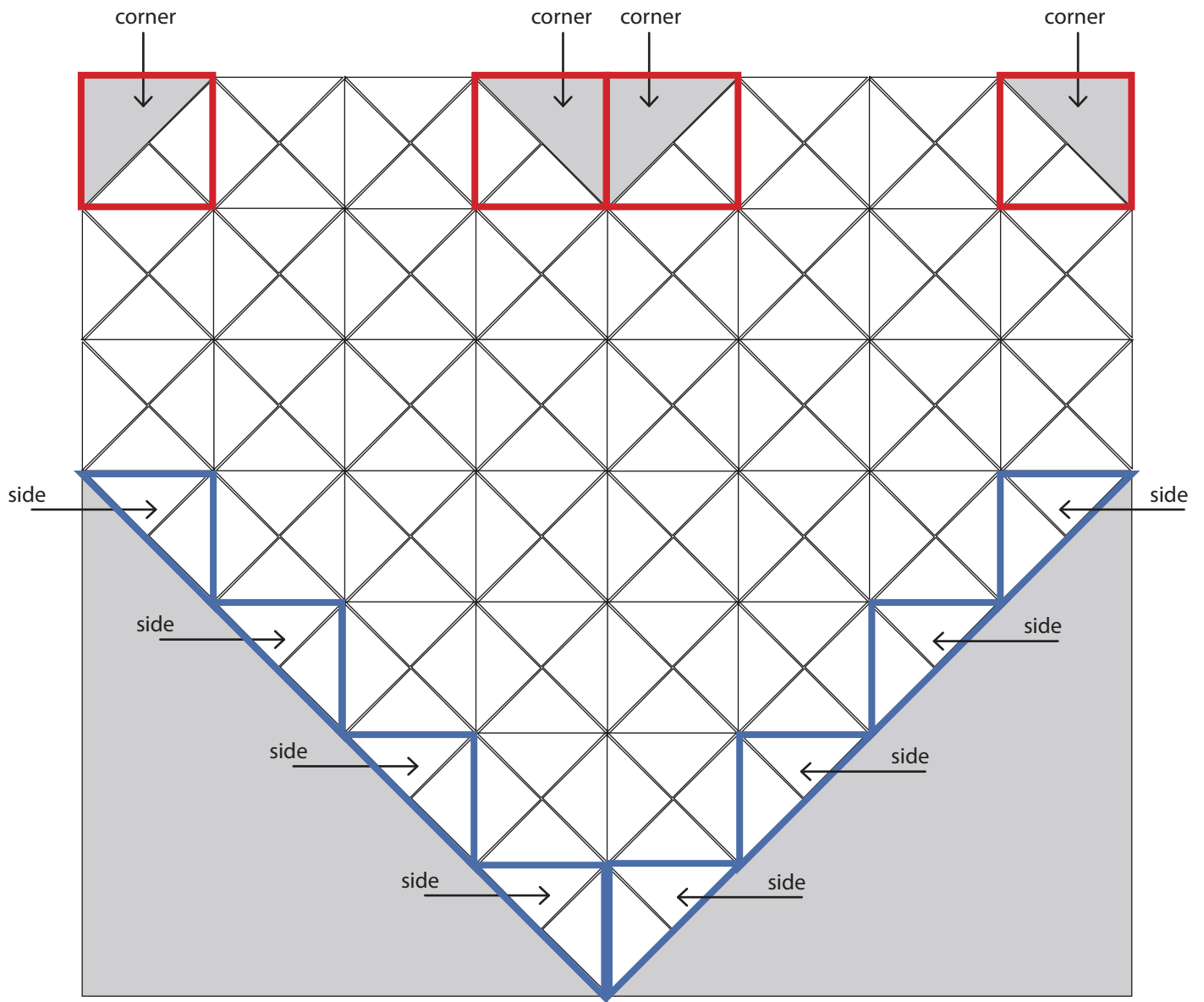


- (D) Sew the Binding One and Binding Two strips ($8-2\frac{1}{2}$ " x width of fabric strips) end-to-end to make the binding. Layer, quilt, and bind.



Quilt is 70 " x 70 " finished.

moda



Coloring Sheet

moda