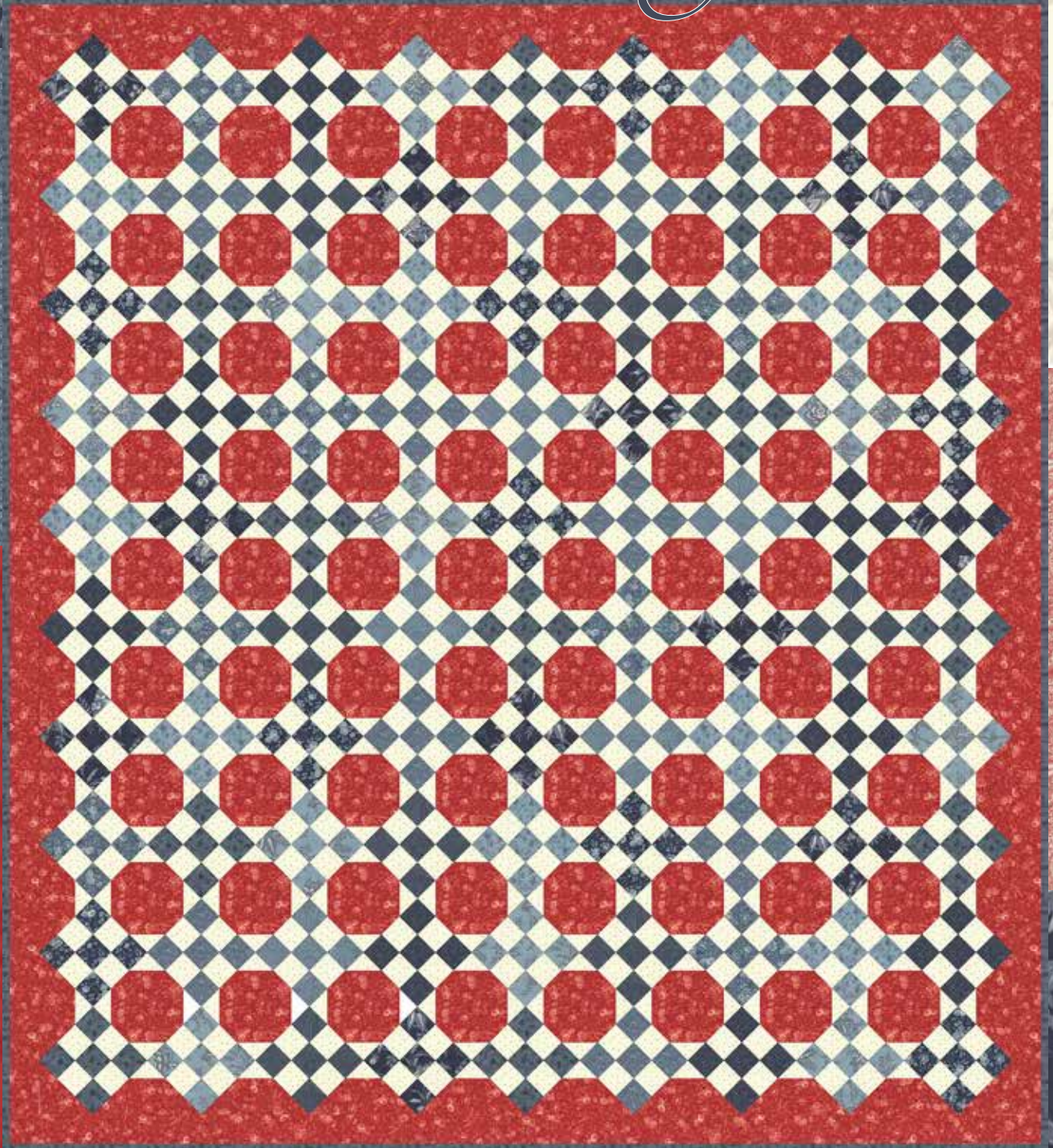


Snowberry *3 Sisters*

Finished Size: 71 1/2" x 79"



moda

Snowberry *3 Sisters*

moda

Quilters Basics

Read instructions before beginning a project.

All instructions include a scant $\frac{1}{4}$ " seam allowance.

Press as you go. Press seams in one direction.

22" measurement is approximate.

WOF = Width of Fabric

Finished Size: 71½" x 79"

Finished Block Size: 5¼" x 5¼"

Cutting:

From **Fabric 1 – Cream**

Cut 44 – 2¼" x WOF strips .

From 18 strips, cut a total of
322 – 2¼" x 2¼" squares.

Cut the remaining 26 strips in half to yield
52 – 2¼" x 21" strips.

From **Fabric 2 – Red**

Cut 11 – 5¾" x WOF strips.

From the strips cut 72 – 5¾" x 5¾" squares
snowball blocks and 2 – 5" x 5" cut once
diagonally for corner squares.

Cut 3 – 6" x WOF strips.

From the strips cut 17 – 6" x 6" squares.

Cut once diagonally for setting squares.

Cut 8 – 2½" x WOF strips for outer border.
Using a diagonal seam join strips into pairs.

Make 4 pairs.

From **Fabric 3 – Blue**

Cut 9 – 2½" x WOF strips for binding.

From each of **Fabrics 4 – 12 – Blues**

Cut 7 – 2¼" x 21" strips

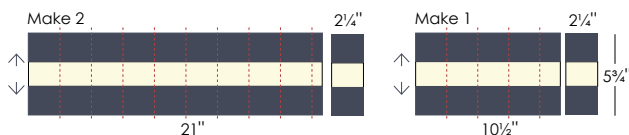
Piecing:

Select 7 – 2¼" x 21" matching blue-print strips
and 7 – 2¼" x 21" background strips .

Cut 2 blue-print strips and 2 background strips
in half to make 4 – 2¼" x 10½" strips.

Blue-Cream-Blue Strip Sets: Join two blue
print strips and one background strip on the
long edge to make a strip set that is 5¾" wide.
Press seams toward arrows. Make 2 long strip
sets (21") and 1 short strip set (10½").

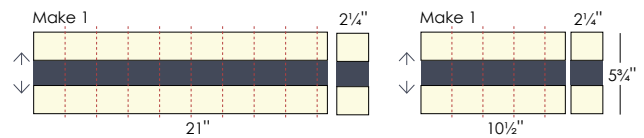
From the 3 strip sets, cut a total of 22 – 2¼"
segments.



Make 2 long strip sets (21") and 1 short strip set (10½").
From the 3 strip sets, cut a total of 22 – 2¼" segments.

Piecing - cont.

Cream-Blue-Cream Strip Sets: Join two back-
ground strips and one blue-print strip on the
long edge to make a strip set that is 5¾" wide.
Press seams toward the blue print.
Make 1– long strip set (21") and 1– short strip
set (10½"). From the 2 strip sets, cut a total of
11 – 2¼" segments .



Make 1 long strip set (21") and 1 short strip set (10½").
From the 2 strip sets, cut a total of 11 – 2¼" segments.

Note: Set aside the 10½" background strip to
use with another set of strips – and save the
10½" blue strip for your scrap bag.

Making the 9-Patch Blocks

Join 2 Blue-Cream-Blues segments and 1
Cream-Blue-Cream segment to make 1–9-Patch
block. Press. *See diagram.*

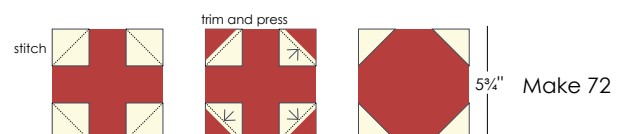


*For variety make a total of 99 nine-patch blocks.
Ninety 9-patch blocks are needed for this quilt.
Extras can be added to the quilt back or pieced for
a pillow.*

Making the Snowball Blocks.

Using a mechanical pencil draw a diagonal line
on the wrong side of the 322 – 2¼" Fabric 1
cream squares.

With right sides together, place one 2¼"
cream square in the four corners of 72 –
5¾" x 5¾" red squares. Stitch on marked lines.
Trim away extra background fabric leaving a
scant $\frac{1}{4}$ " seam allowance. *Do not cut away the
red fabric.* Press the seam toward the corner.
Repeat to make 72 snowball blocks. Blocks
should measure 5¾" x 5¾" with seams.

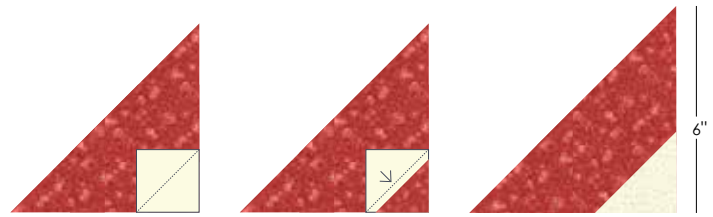


F1
F2
F3
F4
F5
F6
F7
F8
F9
F10
F11
F12

Piecing - cont.

Making the Setting Triangles

Select the 34 Fabric 2 red 6" triangles and the remaining 34 marked 2¼" cream squares. With right sides together, align edges and place one 2¼" square in the 90-degree corner of the 6" triangle (see diagram). Stitch on marked line. Trim away extra background fabric leaving a scant ¼" seam allowance. *Do not cut away the red fabric.* Press the seam toward the corner triangle. Repeat to make 34 setting triangles.



Make 34 setting triangles.

Assemble Quilt

Lay out the blocks in diagonal rows – there will be 9 nine-patch blocks across the top and bottom edges of the quilt top, and 10 nine-patch blocks on the sides of the quilt top. Alternate the snowball blocks with the nine-patch blocks.

Join the blocks to make rows – pressing the seams toward the snowball blocks and setting triangles. Join the rows – pressing the seams in alternate directions – or press them open.

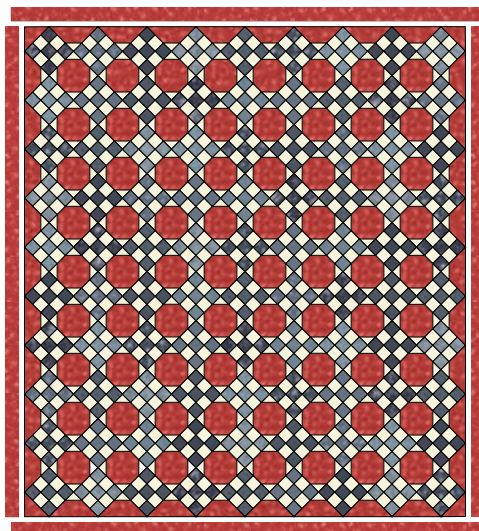
Add the 5" triangles to the four corners. Press.

Using a long ruler, trim the sides of the quilt top if necessary – leaving at least ¼" seam from the corner of the nine-patch blocks.

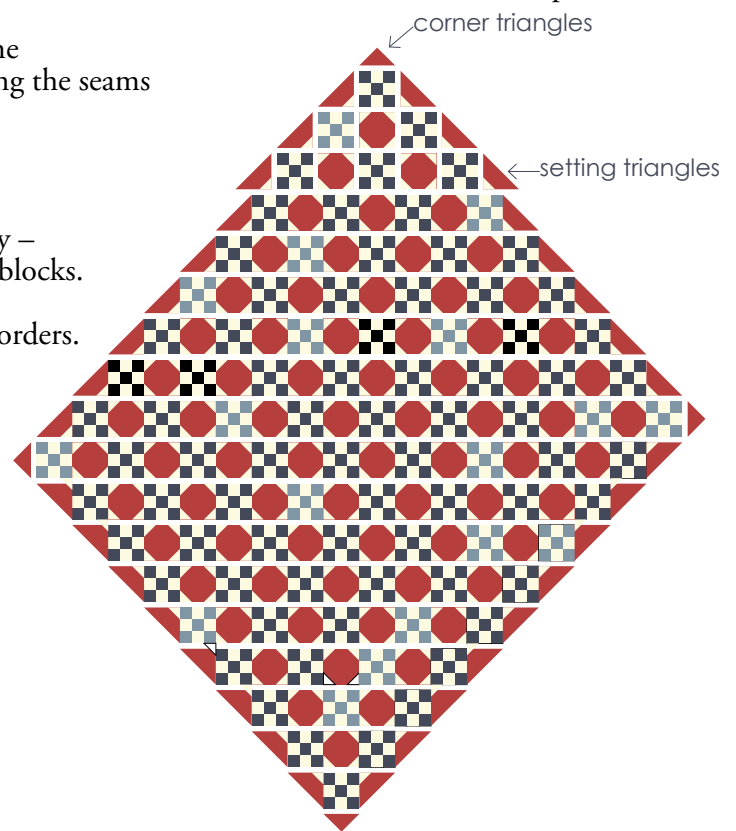
The quilt top will measure approx. 67½" x 74¾" without borders.

Border

Measure the length of the quilt top through the center to determine the length to cut the side borders. Cut two border pairs to that measurement (approx. 74¾") Add the borders to the sides of the quilt. Press toward border.



Quilt should measure 72" x 79½" with seams.



Measure the width of the quilt top through the center including the borders to determine the length to cut the top and bottom borders. Cut two remaining border pairs to that measurement (approx. 71½") Add the borders to the top and bottom of the quilt. Press toward border.

Finishing

Using a bias seam, join the 9 – 2½" x WOF strips end to end. Press seams open. Fold prepared strip in half wrong sides together and press to make the binding.

Layer, Quilt and Bind.

moda

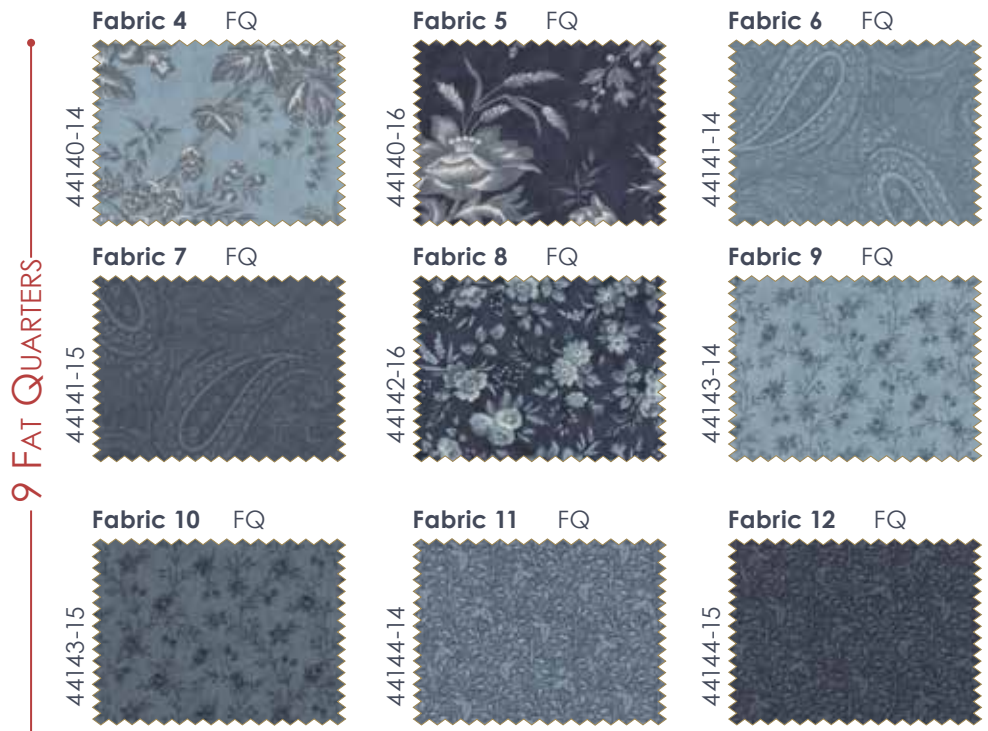
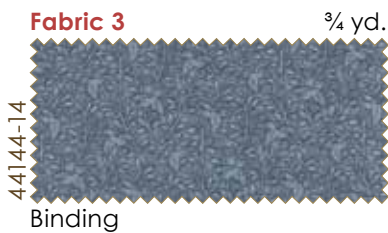
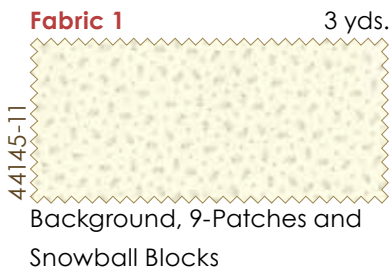
moda

Snowberry *3 Sisters*

Finished Size: 71½" x 79"
Finished Block Size: 5¼" x 5¼"

A bright red berry frozen by a winter storm was the inspiration for the color palette for the Snowberry Collection. Icy whites and gray, shades of blue and vibrant red – all the colors of a bright winter day re-imagined in classic 3 Sisters' floral prints to create a sophisticated collection that will work in any season.

Fabric Requirements



moda
THE COMPANY THAT CARES

MODAFABRICS.COM
PS44140 — SUGGESTED RETAIL \$6.00