

For Crystal Manning, "Endless Inspiration Sparks Fresh Ideas"

"This isn't the path I was expecting to take," Crystal laughs, when asked how her career as a fabric designer began. Since releasing Wild Nectar, her first collection with Moda, this creative path that Crystal "stumbled into" has unfolded in delightful ways, allowing her to explore different styles and develop her own eclectic aesthetic with each new collection.

Prior to designing fabric, Crystal spent 10 years as a graphic designer; but producing catalogs and brochures "didn't fulfill my creative needs," she says. In her free time, she got involved in the art community as her creative outlet, and from there, learned about creating seamless patterns and art licensing.

Getting samples of her designs printed at Spoonflower inspired her to take up sewing. "My sister showed me how to make pillowcases," she says, but she taught herself from there, focusing at first



One of Crystal's first sewing adventures: attempting pajama pants for her husband, Jeff. She said, "I was having a laugh till you cry moment."



Crystal wearing a blouse she made from her fabric collection, Garden Society. Pattern - The Roscoe Blouse by True Bias.

on mostly garment sewing. Crystal quickly fell in love with sewing and "the soothing sound of the hum of the sewing machine" – though she's quick to mention that it wasn't always smooth sailing, chuckling at the memory of an ill-fated attempt at making pajama pants for her husband.

But by 2016, she was using her Spoonflower printed designs to sew samples for indie apparel pattern designers like Lindsey Rae of Sew to Grow, who invited Crystal to attend a quilt market with her. Crystal met with Moda's design team at that market and joined the Moda family of designers not long after that!

Each Collection Is “Like Starting a New Painting”

Though Crystal's collections always feature beautiful nature-inspired flo als, you'd be hard-pressed to pigeonhole her aesthetic or her inspiration into one neat little category. “Moda has allowed me to just be creative,” Crystal says appreciatively. “They haven't really given me any restrictions.” From famous chefs to 1980s pop art to seasonal landscapes, Crystal finds her inspiration “just about everywhere” and interprets that inspiration into unique collections bursting with color. She typically introduces an entirely new palette with each collection, although almost every collection features a shade of teal. “It's hard for me to design a collection without some form of teal!” she says with a laugh.

For Parlor, Crystal wanted to create a collection reminiscent of an interior design picture she found. “It was a boho-style room that was rich with texture and felt like a cozy, artistic space – I wanted to capture that,” she explains. The prints themselves were inspired by vintage fabrics she found on an antiquing adventure with her mother and sister.

The result is a collection brimming with texture, from layered and paisley-styled flo als to geometric mandalas and ikat-inspired diamonds, all in a jewel-toned palette in shades of teal, dijon, pesto, passion fruit, azalea, and plum.

Growing In New Directions

Though the details aren't set in stone, Crystal shared some hints as to what might inspire a future collection. As an artist,



Crystal and her husband, Jeff.

Crystal designs her collections using a mix of traditional and digital techniques. “I like to sketch and paint my flo als first, o decide how I want them to look,” she says, before digitizing and finalizing her designs. “I like the natural look of a brush.” But she is always growing in her art and says that she's been learning more about gouache in the hopes of creating a collection in more of a “painterly” style, perhaps inspired by her love of plein air painting and the pops of color in her favorite flowers and gardens. She also shared that her sewing bucket list includes doing more applique projects.

Whatever the source of inspiration, Crystal says, her goal is simple: to make people feel happy. “I like to use my artistic abilities to inspire others to make things that bring them joy!” We're just happy that Crystal's creative path led her to Moda!

Find joy in the journey with Crystal by visiting her website, crystalmanningart.com, and following her on Instagram at [@cmanningsews](https://www.instagram.com/cmanningsews).



Step into the warmth of Parlor, a fabric collection that feels like an inviting room filled with stories, laughter, and layers of color. With a vibrant, bohemian spirit, Parlor blends rich florals, intricate patterns, and eclectic hues that bring life to any quilting project. Inspired by cozy gatherings and well-loved heirlooms, this collection evokes a sense of comfort while sparking creativity.

The brilliant florals and textures are perfect for bold patchwork, statement quilt backs, or charming home décor. Let Parlor fill your sewing space with vibrant energy, turning each quilt into a reflection of joy, warmth, and the beauty of handmade traditions.

moda **SEPTEMBER DELIVERY**



4 5 6 7 8

moda
FABRICS + SUPPLIES

PARLOR

by CRYSTAL MANNING

PARLOR

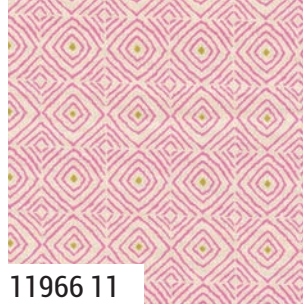
by CRYSTAL  MANNING



11961 11*



11964 11*



11966 11



11962 11



11967 18*



11960 11*



11963 17*



11965 17*



11960 19*



11965 19

9900 182 PORCELAIN

9900 456 DIJON

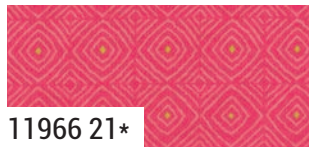
9900 233 PESTO

Bella Solid Coordinates

moda SEPTEMBER DELIVERY

PARLOR

by CRYSTAL  MANNING



11966 21*



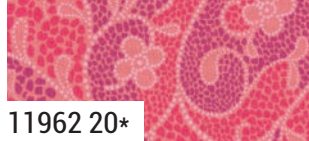
11964 22*



11967 22



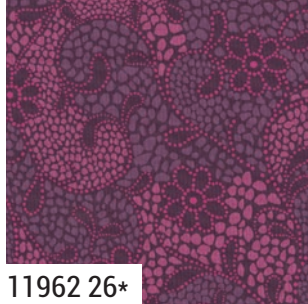
11965 22*



11962 20*



11963 26*



11962 26*



11965 26*



11966 26



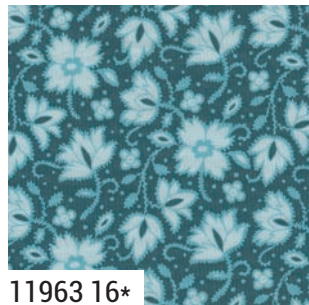
11967 16



11962 15



11960 26*



11963 16*



11964 16*



11960 15*



11966 28*



11961 16*

11960

Asst. 15

Asst. 10

Low Cal 10

AB

JR

LC

MC

PP

KIT

SEPTEMBER DELIVERY

•27 Prints •100% Premium Cotton

AB includes all 27 skus. JRs, LCs, MCs & PPs include 27 skus with two each of 11960, 11961, 11963 & 11966.

Assortments and precuts do not include Bella Solid Coordinates.

moda

Bella Solid Coordinates

7

9900 143 POPSTICLE

9900 440 PASSION FRUIT

9900 238 PRUNE

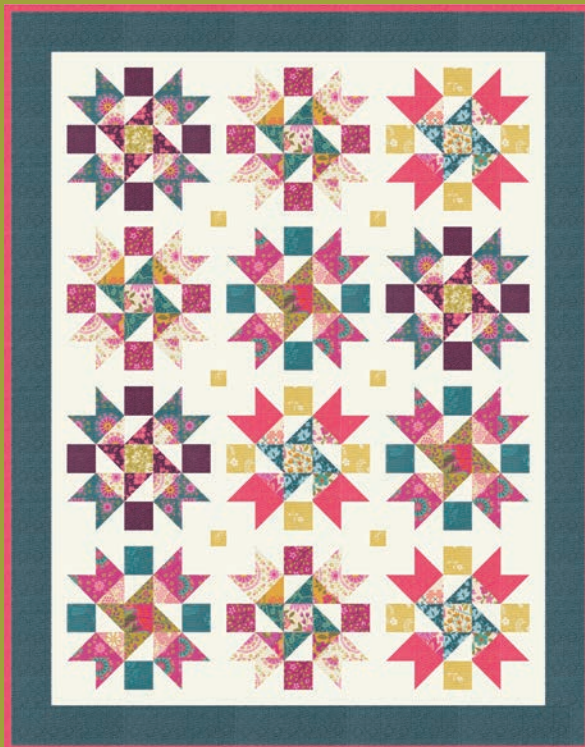
9900 325 SCUBA

9900 110 DARK TEAL

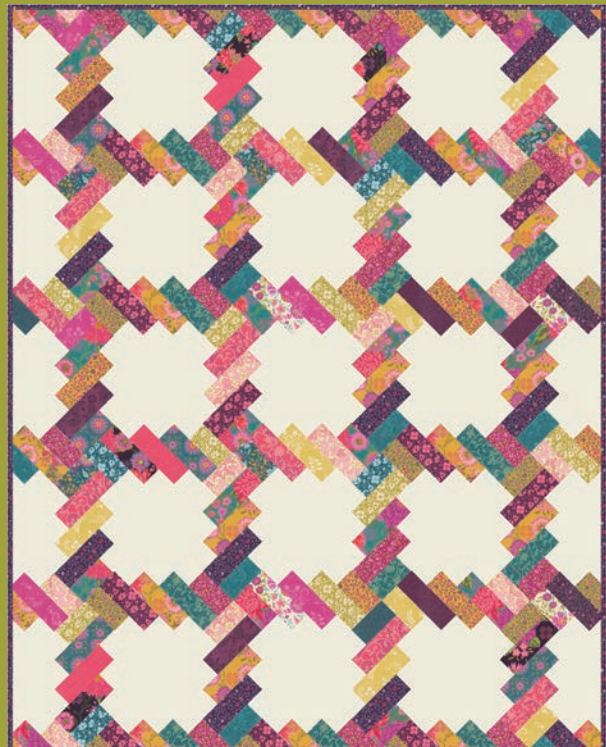


TB 188 Swoon Sixteen 74" x 74" by Thimble Blossoms

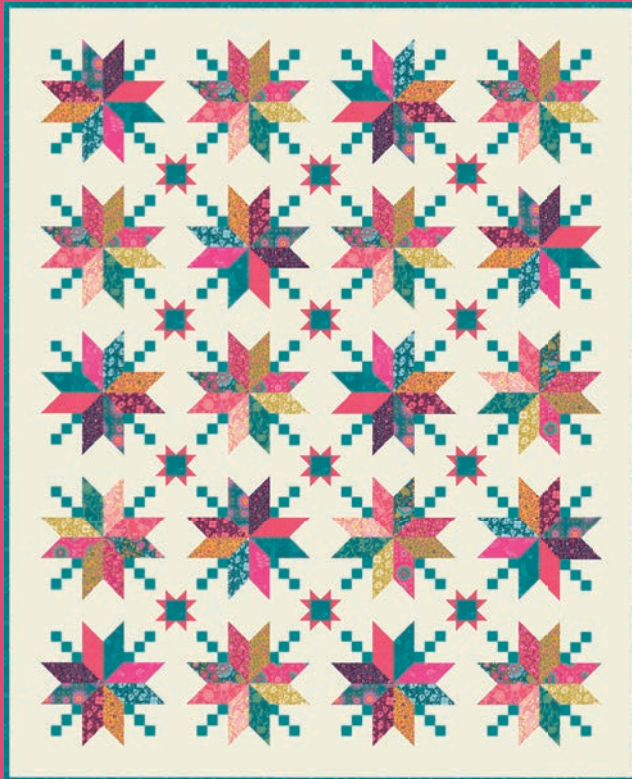
Kit
11960



SS 563 Lucy 61" x 78"
by Splendid Speck



KTQ 164 The Phoebe Quilt 56" x 70" JR Friendly
by Kitchen Table Quilting



CMA 896 Indie Blooms 60" x 74"
by Crystal Manning Art



CMA 897 Patchouli 60" x 67" LC Friendly
by Crystal Manning Art



CMA 898 Saffron and Sage 60" x 60"
by Crystal Manning Art



PS11960 Boho Gem Pillow 18" x 18"
MC Friendly by Crystal Manning Art