



Continuing the exploration of florals from her previous collection Rise, Melody Miller goes even further in her latest group, Stay Gold. This collection has a full range of scales and colors from the lush large-scale florals of 'Shimmer,' to rich tonal 'Meadow' and 'Sparkle' prints, to several tiny supporting prints. Dramatic flowing rayon prints are made for dresses and caftans, and a bold floral canvas is perfect for more structured projects. Three new colors have been added to Melody's Spark palette to support the collection. See the Stay Gold Panel on the following spread.

MAY 2021 DELIVERY

- 28 premium 100% Ruby Star Cotton prints
- 3 Rayon prints
- 3 Cotton Linen Canvas prints (70% cotton / 30% linen)

RS0018



Assortments and precuts do not include panel, rayon or canvas. Precuts and assortments do include new Spark colors.

SUGGESTED SPECKLED COORDINATES & COMPLEMENTS



SUGGESTED SPARK COORDINATES & COMPLEMENTS



SUGGESTED MODA BELLA SOLID COORDINATES & COMPLEMENTS



SHIMMER | SHELL



RS0018-11M

SHIMMER | MERRY



RS0018-12M

FLUTTER | KISS



RS0020-13

FLUTTER | PEACOCK



RS0020-14

SPARKLE | LIPSTICK



RS0022-14M

SPARKLE | PEACOCK



RS0022-15M

BLOSSOM | CREAM SODA



RS0024-11M

BLOSSOM | ORANGE



RS0024-13M

CANVAS SHIMMER | PINK



RS0027-14LM

CANVAS SHIMMER | KISS



RS0027-16LM

MER | PEACOCK



RS0018-14M

NEW LEAF | SHELL



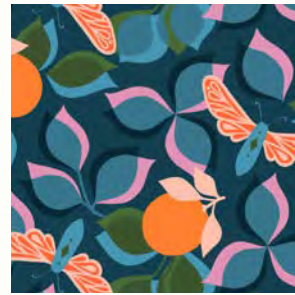
RS0019-11

NEW LEAF | MERRY



RS0019-12

NEW LEAF | PEACOCK



RS0019-14

FLUTTER | SHELL



RS0020-11

MEADOW | FLORIDA



RS0021-11

MEADOW | LIPSTICK



RS0021-13

MEADOW | PEACOCK



RS0021-15

MEADOW | JADE



RS0021-16

SPARKLE | GOLDENROD



RS0022-11M

SPARKLE | EVERGREEN



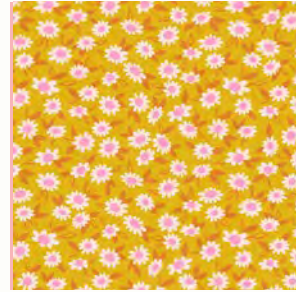
RS0022-17M

MORNING | SHELL



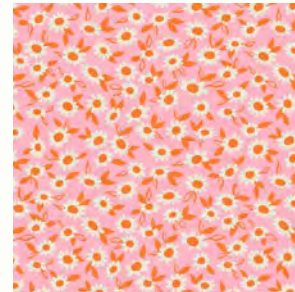
RS0023-11

MORNING | GOLDENROD



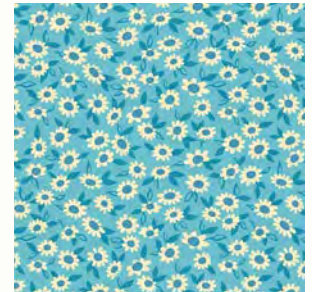
RS0023-12

MORNING | MERRY



RS0023-13

MORNING | TURQUOISE



RS0023-15

MEADOW | MERRY



RS0024-14M

BLOSSOM | VINTAGE BLUE



RS0024-17M

NEW LEAF RAYON | PINK



RS0025-11R

NEW LEAF RAYON | NAVY



RS0025-13R

WILDFLOWERS RAYON | BLACK



RS0026-13R

MEADOW SHIMMER | PEACOCK



RS0027-14LM

SPARK | TURQUOISE



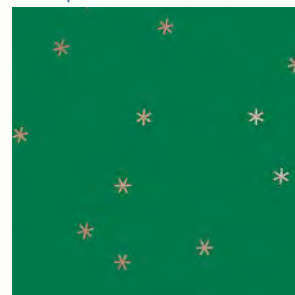
RS0005-39

SPARK | VINTAGE BLUE



RS0005-40M

SPARK | EVERGREEN



RS0005-53M



PEONY BLOSSOM. I DREW A BLOSSOM FOR MY FIRST STAR SOCIETY COLLECTION IN 2014.

THE STAR DRAWING BY DE-ANDRE (TOP) WAS IN THE VERSION IS FROM A LOCAL FABRIC DESIGNER.

DRAWING #26 IN MY PEONY CHALLENGE, 2019

THESE APPLES STILL MAKE ME HUNGRY

SHADES AND COLORS. THIS IS FROM MY PLAY FIVE COLLECTION

I CREATED A LOT OF ART BASED ON SOME VINTAGE FLOCKED FRUIT I BOUGHT IN NEW YORK YEARS AGO

THIS SNAKE ISN'T TOO CREEPY RIGHT? FROM MY FIVE COLLECTION IN 2010.

I REALLY LOVE SOFT SERVE. FROM MY FIRST STAR SOCIETY

FROM MY PLAYFUL COLLECTION IN 2014.

I HAVE A THING FOR VINTAGE SNEAKERS. FROM MY PLAYFUL COLLECTION IN 2014.

THIS IS HOW I FELT AFTER PITCHING THE IDEA FOR A FABRIC COMPANY IN 2013. FROM MUSTARD IN 2014.

MORE FLOCKED FRUIT! I PUT IT ON RAYON IN 2015.

FROM MY PUPPET COLLECTION IN 2015. MY FRIENDS HELPED WRITE CAPTIONS!

DRAWING #26 IN MY NATIONAL 100-DAY-CHALLENGE, 2019

THIS WAS MY HUSBAND'S FIRST CHILDHOOD CAMERA. FROM RUEY STAR ENL IN 2012.

3D SKETCHES FOR

STAY GOLD RUBY STAR



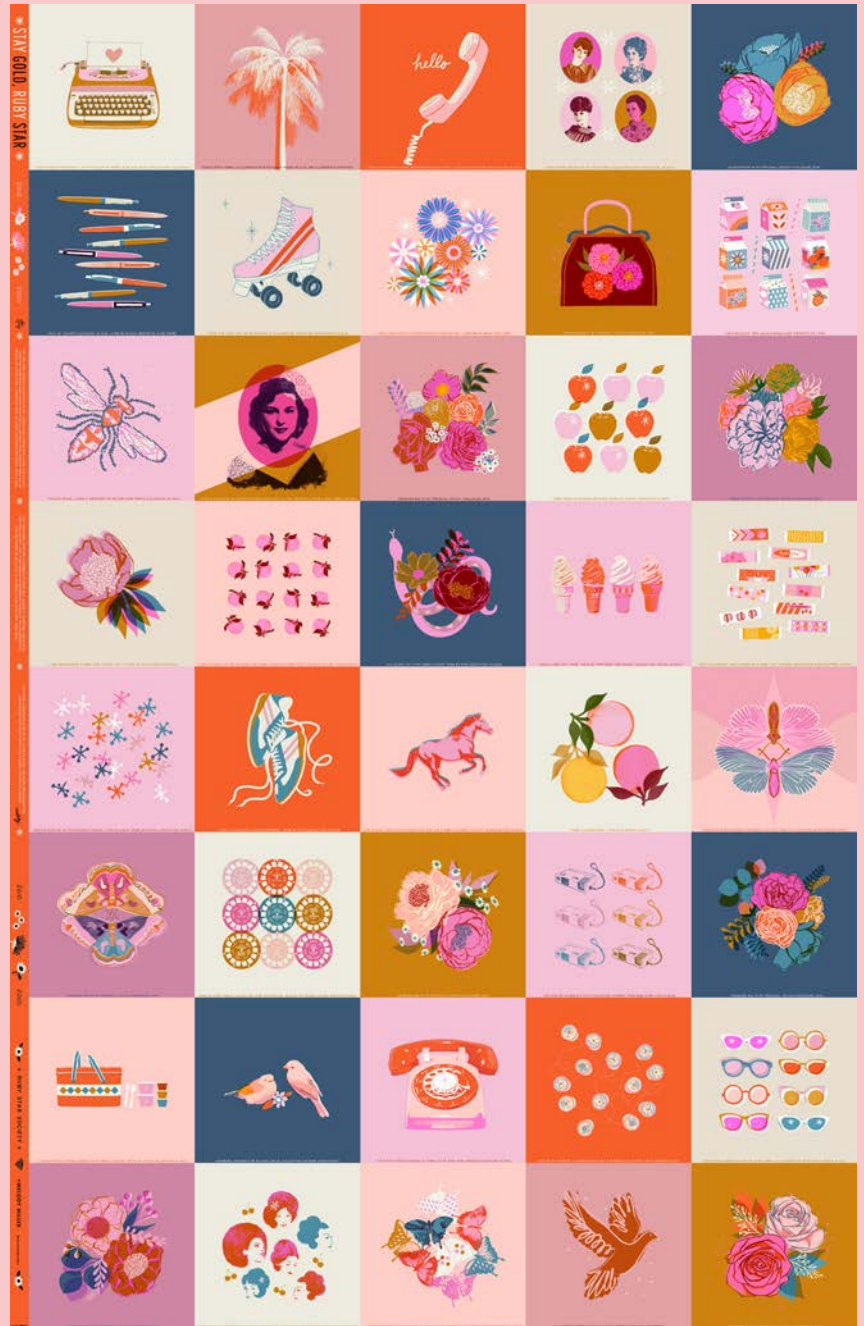
PANEL BY MELODY MILLER

From her first fabric collection Ruby Star Rising in 2010 to Ruby Star Society today, this 40-block panel celebrates 10 years of fabric designs by Melody Miller. She has chosen some of her favorite and most popular motifs, from her typewriter and telephone designs of a decade ago to the recent florals that inspired her Rise and Stay Gold collections.

Panel measures 44" x 72". Selvage indicates where to cut panel. Individual blocks trim to 8½" x 8½" unfinished.

MAY 2021 DELIVERY

100% premium Ruby Star Cotton



RS0028-11

2010



2020



USES
STAY GOLD
PANEL



PSRS0018 Ruby Star Society - Stay Gold Quilt Project Sheet



86" x 86"



PP 111 Patchwork & Poodles - Woven Hearts

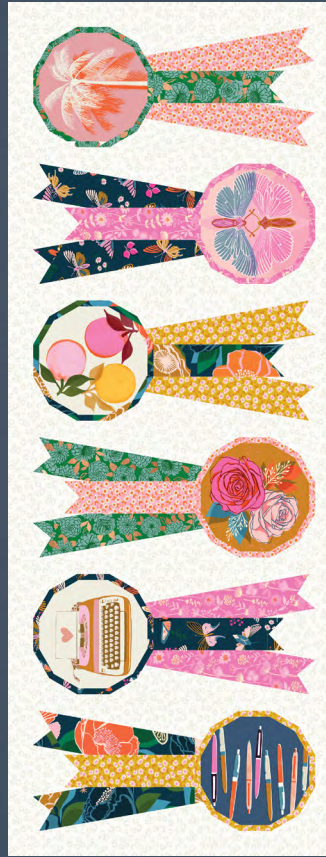
60" x 60"

CC 23
Closet Core Patterns
Elodie Wrap Dress



USES
STAY GOLD
PANEL

FO FRIENDLY



51" x 20"

WCS 031 Whole Circle Studio - Best In Show

60" x 63"



LST 151
Sallie Tomato
Casey
HARDWARE KIT
AVAILABLE - LST 151 G



FO/HY FRIENDLY



KTQ 144 Kitchen Table Quilting - The Penny Quilt

55" x 74"